

## Anti-CREB3L3 antibody (1-100 aa) (STJ191913)

STJ191913

### GENERAL INFORMATION

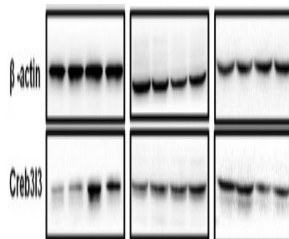
<b>Product Type</b>	Primary antibodies
<b>Short Description</b>	Rabbit polyclonal antibody anti-Cyclic AMP-responsive element-binding protein 3-like protein 3 (1-100 aa) is suitable for use in Western Blot and ELISA research applications.
<b>Applications</b>	WB/ELISA
<b>Host/Source</b>	Rabbit
<b>Reactivity</b>	Human/Mouse/Rat

### PRODUCT PROPERTIES

<b>Clonality</b>	Polyclonal
<b>Clone ID</b>	
<b>Concentration</b>	1 mg/mL
<b>Conjugation</b>	Unconjugated
<b>Purification</b>	The antibody was affinity-purified from rabbit antiserum by affinity-chromatography using epitope-specific immunogen.
<b>Dilution Range</b>	WB 1:500-2000 ELISA 1:5000-20000
<b>Formulation</b>	Liquid in PBS containing 50% Glycerol and 0.02% Sodium Azide.
<b>Isotype</b>	IgG
<b>Storage</b>	Store at -20°C for up to 1 year from the date of receipt, and avoid repeat freeze-thaw cycles.
<b>Instruction</b>	

### TARGET INFORMATION

<b>Gene ID</b>	84699
<b>Gene Symbol</b>	CREB3L3
<b>Uniprot ID</b>	CR3L3_HUMAN
<b>Immunogen</b>	Synthesized peptide derived from part of the human protein at the amino acid range 1-100
<b>Immunogen Region</b>	1-100 aa
<b>Specificity</b>	CR3L3 Polyclonal Antibody detects endogenous levels of protein.
<b>Immunogen Sequence</b>	



Liu, Xiaomei, et al. "Maternal protein restriction induces alterations in hepatic unfolded protein response-related molecules in adult rat offspring." *Frontiers in endocrinology* 9 (2018).

This product is suitable for in-vitro studies under the RESEARCH USE ONLY [RUO] licence. This product must not be used as for diagnostic or other medical purposes.  
St John's Laboratory Ltd, Knowledge Dock Business Centre, University Way, London, E16 2RD | Tel: 0208 223 3081