

Anti-ASPM antibody (1230-1310 aa) (STJ191769)

STJ191769

GENERAL INFORMATION

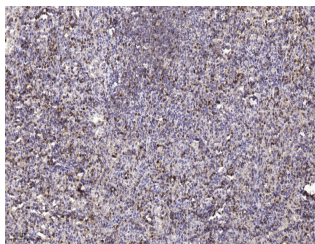
Product Type	Primary antibodies
Short Description	Rabbit polyclonal antibody anti-Abnormal spindle-like microcephaly-associated protein (1230-1310 aa) is suitable for use in Immunohistochemistry and Immunofluorescence research applications.
Applications	IHC/IF
Host/Source	Rabbit
Reactivity	Human/Rat/Mouse

PRODUCT PROPERTIES

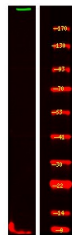
Clonality	Polyclonal
Clone ID	
Concentration	1 mg/mL
Conjugation	Unconjugated
Purification	The antibody was affinity-purified from rabbit antiserum by affinity-chromatography using epitope-specific immunogen.
Dilution Range	IHC-P 1:50-300 IF 1:50-200
Formulation	Liquid in PBS containing 50% Glycerol and 0.02% Sodium Azide.
Isotype	IgG
Storage	Store at -20°C for up to 1 year from the date of receipt, and avoid repeat freeze-thaw cycles.
Instruction	

TARGET INFORMATION

Gene ID	259266
Gene Symbol	ASPM
Uniprot ID	ASPM_HUMAN
Immunogen	Synthesized peptide derived from the human protein at the amino acid range 1230-1310
Immunogen Region	1230-1310 aa
Specificity	ASPM Polyclonal Antibody detects endogenous levels of protein.
Immunogen Sequence	



Immunohistochemical analysis of paraffin-embedded human spleen tissue. 1. primary Antibody was diluted at 1:200 (4°C overnight), 2. Sodium citrate pH 6.0 was used for antigen retrieval (>98°C, 20min). 3. Secondary antibody was diluted at 1:200



Western Blot analysis of K-562 cell, using primary antibody at 1:1000 dilution. Secondary antibody (STJ5000791) was diluted at 1:10000

This product is suitable for in-vitro studies under the RESEARCH USE ONLY [RUO] licence. This product must not be used as for diagnostic or other medical purposes.
St John's Laboratory Ltd, Knowledge Dock Business Centre, University Way, London, E16 2RD | Tel: 0208 223 3081