

Anti-SLC8A3 antibody (530-610 aa) (STJ191439)

STJ191439

GENERAL INFORMATION

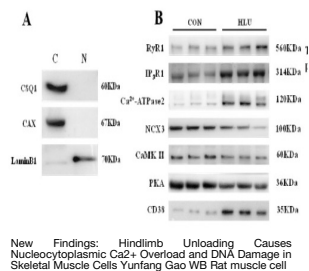
Product Type	Primary antibodies
Short Description	Rabbit polyclonal antibody anti-Sodium/calcium exchanger 3/Ca ²⁺ -exchange protein 3 (530-610 aa) is suitable for use in Western Blot and ELISA research applications.
Applications	WB/ELISA
Host/Source	Rabbit
Reactivity	Human/Mouse/Rat

PRODUCT PROPERTIES

Clonality	Polyclonal
Clone ID	
Concentration	1 mg/mL
Conjugation	Unconjugated
Purification	The antibody was affinity-purified from rabbit antiserum by affinity-chromatography using epitope-specific immunogen.
Dilution Range	WB 1:500-2000 ELISA 1:5000-20000
Formulation	Liquid in PBS containing 50% Glycerol and 0.02% Sodium Azide.
Isotype	IgG
Storage	Store at -20°C for up to 1 year from the date of receipt, and avoid repeat freeze-thaw cycles.
Instruction	

TARGET INFORMATION

Gene ID	6547
Gene Symbol	SLC8A3
Uniprot ID	NAC3_HUMAN
Immunogen	Synthesized peptide derived from the human protein at the amino acid range 530-610
Immunogen Region	530-610 aa
Specificity	NAC3 Polyclonal Antibody detects endogenous levels of protein.
Immunogen Sequence	



New Findings: Hindlimb Unloading Causes Nucleocytoplasmic Ca²⁺ Overload and DNA Damage in Skeletal Muscle Cells Yuntang Gao WB Rat muscle cell

This product is suitable for in-vitro studies under the RESEARCH USE ONLY [RUO] licence. This product must not be used as for diagnostic or other medical purposes.
St John's Laboratory Ltd, Knowledge Dock Business Centre, University Way, London, E16 2RD | Tel: 0208 223 3081