

Anti-ARHGEF15 antibody (560-640 aa) (STJ191326)

STJ191326

GENERAL INFORMATION

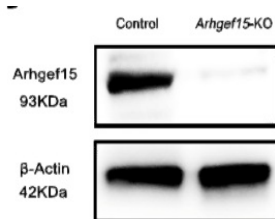
Product Type	Primary antibodies
Short Description	Rabbit polyclonal antibody anti-Rho guanine nucleotide exchange factor 15 (560-640 aa) is suitable for use in Western Blot and ELISA research applications.
Applications	WB/ELISA
Host/Source	Rabbit
Reactivity	Human/Mouse

PRODUCT PROPERTIES

Clonality	Polyclonal
Clone ID	
Concentration	1 mg/mL
Conjugation	Unconjugated
Purification	The antibody was affinity-purified from rabbit antiserum by affinity-chromatography using epitope-specific immunogen.
Dilution Range	WB 1:500-2000 ELISA 1:5000-20000
Formulation	Liquid in PBS containing 50% Glycerol and 0.02% Sodium Azide.
Isotype	IgG
Storage	Store at -20°C for up to 1 year from the date of receipt, and avoid repeat freeze-thaw cycles.
Instruction	

TARGET INFORMATION

Gene ID	22899
Gene Symbol	ARHGEF15
Uniprot ID	ARHGF_HUMAN
Immunogen	Synthesized peptide derived from the human protein at the amino acid range 560-640
Immunogen Region	560-640 aa
Specificity	ARHGF Polyclonal Antibody detects endogenous levels of protein.
Immunogen Sequence	



ARHGEF15 is expressed in undifferentiated spermatogonia but is not required for spermatogenesis in mice. Reproductive Biology Qi-En Yang WB mouse testicular tissues.