

Anti-SYNE2 antibody (360-440 aa) (STJ191047)

STJ191047

GENERAL INFORMATION

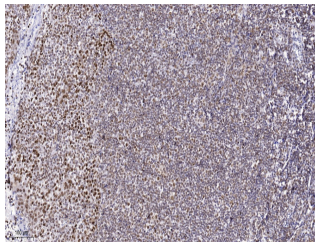
| | |
|--------------------------|--|
| Product Type | Primary antibodies |
| Short Description | Rabbit polyclonal antibody anti-Nesprin-2 (360-440 aa) is suitable for use in Immunohistochemistry and Immunofluorescence research applications. |
| Applications | IHC/IF |
| Host/Source | Rabbit |
| Reactivity | Human/Mouse |

PRODUCT PROPERTIES

| | |
|-----------------------|---|
| Clonality | Polyclonal |
| Clone ID | |
| Concentration | 1 mg/mL |
| Conjugation | Unconjugated |
| Purification | The antibody was affinity-purified from rabbit antiserum by affinity-chromatography using epitope-specific immunogen. |
| Dilution Range | IHC-P 1:50-300 IF 1:50-200 |
| Formulation | Liquid in PBS containing 50% Glycerol and 0.02% Sodium Azide. |
| Isotype | IgG |
| Storage | Store at -20°C for up to 1 year from the date of receipt, and avoid repeat freeze-thaw cycles. |
| Instruction | |

TARGET INFORMATION

| | |
|---------------------------|--|
| Gene ID | 23224 |
| Gene Symbol | SYNE2 |
| Uniprot ID | SYNE2_HUMAN |
| Immunogen | Synthesized peptide derived from the human protein at the amino acid range 360-440 |
| Immunogen Region | 360-440 aa |
| Specificity | SYNE2 Polyclonal Antibody detects endogenous levels of protein. |
| Immunogen Sequence | |



Immunohistochemical analysis of paraffin-embedded human tonsil. 1. Antibody was diluted at 1:200 (4°C overnight). 2. Tris-EDTA, pH9.0 was used for antigen retrieval. 3. Secondary antibody was diluted at 1:200 (room temperature, 45min).