

## Anti-MT-ND4L antibody (10-90 aa) (STJ191042)

STJ191042

### GENERAL INFORMATION

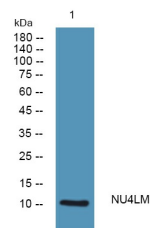
|                          |                                                                                                                                                         |
|--------------------------|---------------------------------------------------------------------------------------------------------------------------------------------------------|
| <b>Product Type</b>      | Primary antibodies                                                                                                                                      |
| <b>Short Description</b> | Rabbit polyclonal antibody anti-NADH-ubiquinone oxidoreductase chain 4L (10-90 aa) is suitable for use in Western Blot and ELISA research applications. |
| <b>Applications</b>      | WB/ELISA                                                                                                                                                |
| <b>Host/Source</b>       | Rabbit                                                                                                                                                  |
| <b>Reactivity</b>        | Human/Rat/Mouse                                                                                                                                         |

### PRODUCT PROPERTIES

|                       |                                                                                                                       |
|-----------------------|-----------------------------------------------------------------------------------------------------------------------|
| <b>Clonality</b>      | Polyclonal                                                                                                            |
| <b>Clone ID</b>       |                                                                                                                       |
| <b>Concentration</b>  | 1 mg/mL                                                                                                               |
| <b>Conjugation</b>    | Unconjugated                                                                                                          |
| <b>Purification</b>   | The antibody was affinity-purified from rabbit antiserum by affinity-chromatography using epitope-specific immunogen. |
| <b>Dilution Range</b> | WB 1:500-2000<br>ELISA 1:5000-20000                                                                                   |
| <b>Formulation</b>    | Liquid in PBS containing 50% Glycerol and 0.02% Sodium Azide.                                                         |
| <b>Isotype</b>        | IgG                                                                                                                   |
| <b>Storage</b>        | Store at -20°C for up to 1 year from the date of receipt, and avoid repeat freeze-thaw cycles.                        |
| <b>Instruction</b>    |                                                                                                                       |

### TARGET INFORMATION

|                           |                                                                                  |
|---------------------------|----------------------------------------------------------------------------------|
| <b>Gene ID</b>            | 4539                                                                             |
| <b>Gene Symbol</b>        | MT-ND4L                                                                          |
| <b>Uniprot ID</b>         | NU4LM_HUMAN                                                                      |
| <b>Immunogen</b>          | Synthesized peptide derived from the human protein at the amino acid range 10-90 |
| <b>Immunogen Region</b>   | 10-90 aa                                                                         |
| <b>Specificity</b>        | NU4LM Polyclonal Antibody detects endogenous levels of protein.                  |
| <b>Immunogen Sequence</b> |                                                                                  |



Western blot analysis of lysates from KB cells, primary antibody was diluted at 1:1000, 4A°C over night

This product is suitable for in-vitro studies under the RESEARCH USE ONLY [RUO] licence. This product must not be used as for diagnostic or other medical purposes.  
St John's Laboratory Ltd, Knowledge Dock Business Centre, University Way, London, E16 2RD | Tel: 0208 223 3081