

Anti-MPHOSPH8 antibody (290-370 aa) (STJ190980)

STJ190980

GENERAL INFORMATION

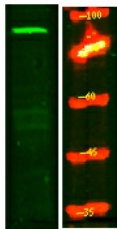
Product Type	Primary antibodies
Short Description	Rabbit polyclonal antibody anti-M-phase phosphoprotein 8 (290-370 aa) is suitable for use in Western Blot and ELISA research applications.
Applications	WB/ELISA
Host/Source	Rabbit
Reactivity	Human/Rat/Mouse

PRODUCT PROPERTIES

Clonality	Polyclonal
Clone ID	
Concentration	1 mg/mL
Conjugation	Unconjugated
Purification	The antibody was affinity-purified from rabbit antiserum by affinity-chromatography using epitope-specific immunogen.
Dilution Range	WB 1:500-2000 ELISA 1:5000-20000
Formulation	Liquid in PBS containing 50% Glycerol and 0.02% Sodium Azide.
Isotype	IgG
Storage Instruction	Store at -20°C for up to 1 year from the date of receipt, and avoid repeat freeze-thaw cycles.

TARGET INFORMATION

Gene ID	54737
Gene Symbol	MPHOSPH8
Uniprot ID	MPP8_HUMAN
Immunogen	Synthesized peptide derived from the human protein at the amino acid range 290-370
Immunogen Region	290-370 aa
Specificity	MPP8 Polyclonal Antibody detects endogenous levels of protein.
Immunogen Sequence	



Western Blot analysis of HeLa lysis, using primary antibody at 1:1000 dilution. Secondary antibody (STJS000791) was diluted at 1:10000

This product is suitable for in-vitro studies under the RESEARCH USE ONLY [RUO] licence. This product must not be used as for diagnostic or other medical purposes.
St John's Laboratory Ltd, Knowledge Dock Business Centre, University Way, London, E16 2RD | Tel: 0208 223 3081