

Anti-POLR2H antibody (STJ190772)

STJ190772

GENERAL INFORMATION

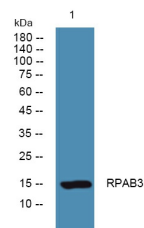
| | |
|--------------------------|---|
| Product Type | Primary antibodies |
| Short Description | Rabbit polyclonal antibody anti-DNA-directed RNA polymerases I, II, and III subunit RPABC3 is suitable for use in Western Blot and ELISA research applications. |
| Applications | WB/ELISA |
| Host/Source | Rabbit |
| Reactivity | Human/Mouse |

PRODUCT PROPERTIES

| | |
|-----------------------|---|
| Clonality | Polyclonal |
| Clone ID | |
| Concentration | 1 mg/mL |
| Conjugation | Unconjugated |
| Purification | The antibody was affinity-purified from rabbit antiserum by affinity-chromatography using epitope-specific immunogen. |
| Dilution Range | WB 1:500-2000 ELISA 1:5000-20000 |
| Formulation | Liquid in PBS containing 50% Glycerol and 0.02% Sodium Azide. |
| Isotype | IgG |
| Storage | Store at -20°C for up to 1 year from the date of receipt, and avoid repeat freeze-thaw cycles. |
| Instruction | |

TARGET INFORMATION

| | |
|---------------------------|---|
| Gene ID | 5437 |
| Gene Symbol | POLR2H |
| Uniprot ID | RPAB3_HUMAN |
| Immunogen | Synthesized peptide derived from part of the human protein |
| Immunogen Region | |
| Specificity | RPAB3 Polyclonal Antibody detects endogenous levels of protein. |
| Immunogen Sequence | |



Western blot analysis of lysates from DU145 cells, primary antibody was diluted at 1:1000, 4A°C over night

This product is suitable for in-vitro studies under the RESEARCH USE ONLY [RUO] licence. This product must not be used as for diagnostic or other medical purposes.
St John's Laboratory Ltd, Knowledge Dock Business Centre, University Way, London, E16 2RD | Tel: 0208 223 3081