

Anti-LUC7L3 antibody (STJ190702)

STJ190702

GENERAL INFORMATION

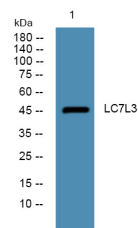
Product Type	Primary antibodies
Short Description	Rabbit polyclonal antibody anti-Luc7-like protein 3 is suitable for use in Western Blot and ELISA research applications.
Applications	WB/ELISA
Host/Source	Rabbit
Reactivity	Human/Mouse

PRODUCT PROPERTIES

Clonality	Polyclonal
Clone ID	
Concentration	1 mg/mL
Conjugation	Unconjugated
Purification	The antibody was affinity-purified from rabbit antiserum by affinity-chromatography using epitope-specific immunogen.
Dilution Range	WB 1:500-2000 ELISA 1:5000-20000
Formulation	Liquid in PBS containing 50% Glycerol and 0.02% Sodium Azide.
Isotype	IgG
Storage Instruction	Store at -20°C for up to 1 year from the date of receipt, and avoid repeat freeze-thaw cycles.

TARGET INFORMATION

Gene ID	51747
Gene Symbol	LUC7L3
Uniprot ID	LC7L3_HUMAN
Immunogen	Synthesized peptide derived from part of the human protein
Immunogen Region	
Specificity	LC7L3 Polyclonal Antibody detects endogenous levels of protein.
Immunogen Sequence	



Western blot analysis of lysates from SW480 cells, primary antibody was diluted at 1:1000, 4A°C over night

This product is suitable for in-vitro studies under the RESEARCH USE ONLY [RUO] licence. This product must not be used as for diagnostic or other medical purposes.
St John's Laboratory Ltd, Knowledge Dock Business Centre, University Way, London, E16 2RD | Tel: 0208 223 3081