

Anti-AXIN1 antibody (190-270 aa) (STJ190598)

STJ190598

GENERAL INFORMATION

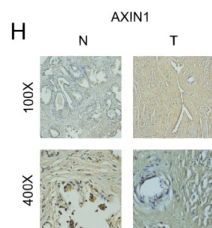
Product Type	Primary antibodies
Short Description	Rabbit polyclonal antibody anti-Axin-1 (190-270 aa) is suitable for use in Western Blot and Immunohistochemistry research applications.
Applications	WB/IHC
Host/Source	Rabbit
Reactivity	Human/Mouse/Rat

PRODUCT PROPERTIES

Clonality	Polyclonal
Clone ID	
Concentration	1 mg/mL
Conjugation	Unconjugated
Purification	The antibody was affinity-purified from rabbit antiserum by affinity-chromatography using epitope-specific immunogen.
Dilution Range	WB 1:500-2000 ELISA 1:5000-20000
Formulation	Liquid in PBS containing 50% Glycerol and 0.02% Sodium Azide.
Isotype	IgG
Storage Instruction	Store at -20°C for up to 1 year from the date of receipt, and avoid repeat freeze-thaw cycles.

TARGET INFORMATION

Gene ID	8312
Gene Symbol	AXIN1
Uniprot ID	AXIN1_HUMAN
Immunogen	Synthesized peptide derived from the human protein at the amino acid range 190-270
Immunogen Region	190-270 aa
Specificity	AXIN1 Polyclonal Antibody detects endogenous levels of protein.
Immunogen Sequence	



A Liquid-Liquid Phase Separation-Related Index Associate with Biochemical Recurrence and Tumor Immune Environment of Prostate Cancer Patients
INTERNATIONAL JOURNAL OF MOLECULAR SCIENCES Ning Xu IHC Human benign prostatic hyperplasia (BPH) tissue prostate cancer (PCa) cell