

## Anti-RPS15A antibody (60-140 aa) (STJ190468)

STJ190468

### GENERAL INFORMATION

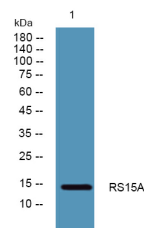
|                          |  |
|--------------------------|--|
| <b>Product Type</b>      | Primary antibodies   |
| <b>Short Description</b> | Rabbit polyclonal antibody anti-Small ribosomal subunit protein uS8 (60-140 aa) is suitable for use in Western Blot and ELISA research applications. |
| <b>Applications</b>      | WB/ELISA   |
| <b>Host/Source</b>       | Rabbit   |
| <b>Reactivity</b>        | Human/Mouse/Rat  |

### PRODUCT PROPERTIES

|                       |   |
|-----------------------|---|
| <b>Clonality</b>      | Polyclonal  |
| <b>Clone ID</b>       |   |
| <b>Concentration</b>  | 1 mg/mL   |
| <b>Conjugation</b>    | Unconjugated  |
| <b>Purification</b>   | The antibody was affinity-purified from rabbit antiserum by affinity-chromatography using epitope-specific immunogen. |
| <b>Dilution Range</b> | WB 1:500-2000<br>ELISA 1:5000-20000   |
| <b>Formulation</b>    | Liquid in PBS containing 50% Glycerol and 0.02% Sodium Azide.   |
| <b>Isotype</b>        | IgG   |
| <b>Storage</b>        | Store at -20°C for up to 1 year from the date of receipt, and avoid repeat freeze-thaw cycles.                        |
| <b>Instruction</b>    |   |

### TARGET INFORMATION

|                           |   |
|---------------------------|---|
| <b>Gene ID</b>            | <a href="#">6210</a>  |
| <b>Gene Symbol</b>        | <a href="#">RPS15A</a>  |
| <b>Uniprot ID</b>         | <a href="#">RS15A_HUMAN</a>   |
| <b>Immunogen</b>          | Synthesized peptide derived from the human protein at the amino acid range 60-140 |
| <b>Immunogen Region</b>   | 60-140 aa   |
| <b>Specificity</b>        | RS15A Polyclonal Antibody detects endogenous levels of protein.                   |
| <b>Immunogen Sequence</b> |   |



Western blot analysis of lysates from KB cells, primary antibody was diluted at 1:1000, 4A°C over night

This product is suitable for in-vitro studies under the RESEARCH USE ONLY [RUO] licence. This product must not be used as for diagnostic or other medical purposes.  
St John's Laboratory Ltd, Knowledge Dock Business Centre, University Way, London, E16 2RD | Tel: 0208 223 3081