

Anti-MT-CO1 antibody (380-460 aa) (STJ190281)

STJ190281

GENERAL INFORMATION

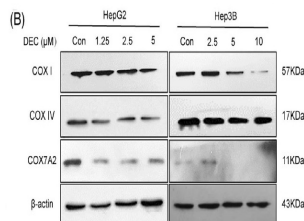
Product Type	Primary antibodies
Short Description	Rabbit polyclonal antibody anti-Cytochrome c oxidase subunit 1 (380-460 aa) is suitable for use in Western Blot and ELISA research applications.
Applications	WB/ELISA
Host/Source	Rabbit
Reactivity	Human/Mouse

PRODUCT PROPERTIES

Clonality	Polyclonal
Clone ID	
Concentration	1 mg/mL
Conjugation	Unconjugated
Purification	The antibody was affinity-purified from rabbit antiserum by affinity-chromatography using epitope-specific immunogen.
Dilution Range	WB 1:500-2000 ELISA 1:5000-20000
Formulation	Liquid in PBS containing 50% Glycerol and 0.02% Sodium Azide.
Isotype	IgG
Storage Instruction	Store at -20°C for up to 1 year from the date of receipt, and avoid repeat freeze-thaw cycles.

TARGET INFORMATION

Gene ID	4512
Gene Symbol	MT-CO1
Uniprot ID	COX1_HUMAN
Immunogen	Synthesized peptide derived from the human protein at the amino acid range 380-460
Immunogen Region	380-460 aa
Specificity	COX1 Polyclonal Antibody detects endogenous levels of protein.
Immunogen Sequence	



The nature compound dehydrorenatidine exerts potent antihepatocellular carcinoma by destroying mitochondrial complexes in vitro and in vivo 2022 Feb 02. WB Human