

Anti-DMP1 antibody (430-510 aa) (STJ190216)

STJ190216

GENERAL INFORMATION

Product Type	Primary antibodies
Short Description	Rabbit polyclonal antibody anti-Dentin matrix acidic phosphoprotein 1 (430-510 aa) is suitable for use in Western Blot and ELISA research applications.
Applications	WB/ELISA
Host/Source	Rabbit
Reactivity	Human/Rat/Mouse

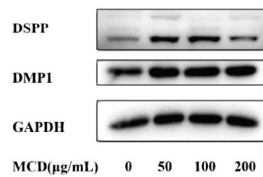
PRODUCT PROPERTIES

Clonality	Polyclonal
Clone ID	
Concentration	1 mg/mL
Conjugation	Unconjugated
Purification	The antibody was affinity-purified from rabbit antiserum by affinity-chromatography using epitope-specific immunogen.
Dilution Range	WB 1:500-2000 ELISA 1:5000-20000
Formulation	Liquid in PBS containing 50% Glycerol and 0.02% Sodium Azide.
Isotype	IgG
Storage	Store at -20°C for up to 1 year from the date of receipt, and avoid repeat freeze-thaw cycles.
Instruction	

TARGET INFORMATION

Gene ID	1758
Gene Symbol	DMP1
Uniprot ID	DMP1_HUMAN
Immunogen	Synthesized peptide derived from the human protein at the amino acid range 430-510
Immunogen Region	430-510 aa
Specificity	DMP1 Polyclonal Antibody detects endogenous levels of protein.
Immunogen Sequence	

C



Metformin carbon nanodots promote odontoblastic differentiation of dental pulp stem cells by pathway of autophagy. Frontiers in Bioengineering and Biotechnology Yi Li WB Human

This product is suitable for in-vitro studies under the RESEARCH USE ONLY [RUO] licence. This product must not be used as for diagnostic or other medical purposes.
St John's Laboratory Ltd, Knowledge Dock Business Centre, University Way, London, E16 2RD | Tel: 0208 223 3081