

Anti-SMARCB1 antibody (300-385 aa) [ABT188] (STJ190074)

STJ190074

GENERAL INFORMATION

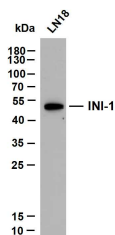
Product Type	Primary antibodies
Short Description	Mouse monoclonal antibody anti-SWI/SNF-related matrix-associated actin-dependent regulator of chromatin subfamily B member 1 (300-385 aa) is suitable for use in Immunohistochemistry and Western Blot research applications.
Applications	IHC/WB
Host/Source	Mouse
Reactivity	Human/Mouse/Rat

PRODUCT PROPERTIES

Clonality	Monoclonal
Clone ID	ABT188
Concentration	
Conjugation	Unconjugated
Purification	The antibody was affinity-purified from mouse ascites by affinity-chromatography using specific immunogen.
Dilution	IHC-P 1:200-400
Range	WB 500-1000
Formulation	Liquid in PBS pH7.2, 0.03% Proclin 300, with stabilizing protein.
Isotype	IgG2bk
Storage	Store at -20°C for up to 1 year from the date of receipt, and avoid repeat freeze-thaw cycles.
Instruction	

TARGET INFORMATION

Gene ID	6598
Gene Symbol	SMARCB1
Uniprot ID	SNF5_HUMAN
Immunogen	Synthesized peptide derived from the human INI-1 at the amino acid range 300-385
Immunogen Region	300-385 aa
Specificity	The antibody can specifically recognize human INI-1 protein, including INI-1A and INI-1B. In western blotting of Hela and LnCap cell lysates, the antibody can label two bands with molecular weight of
Immunogen Sequence	



LN18 whole cell lysates were separated by 10% SDS-PAGE, and the membrane was blotted with anti-INI-1 (ABT188) antibody. The HRP-conjugated Goat anti-mouse IgG (H + L) antibody was used to detect the antibody. Lane 1: LN18 Predicted band size: 44kDa Observed band size: 44kDa

This product is suitable for in-vitro studies under the RESEARCH USE ONLY [RUO] licence. This product must not be used as for diagnostic or other medical purposes.
St John's Laboratory Ltd, Knowledge Dock Business Centre, University Way, London, E16 2RD | Tel: 0208 223 3081