

Anti-GSTP1 antibody (150-210 aa) [ABT256] (STJ190072)

STJ190072

GENERAL INFORMATION

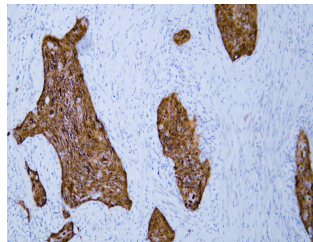
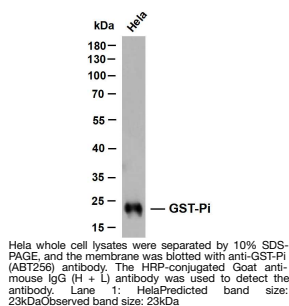
Product Type	Primary antibodies
Short Description	Mouse monoclonal antibody anti-Glutathione S-transferase P (150-210 aa) is suitable for use in Immunohistochemistry and Western Blot research applications.
Applications	IHC/WB
Host/Source	Mouse
Reactivity	Human/Mouse/Rat

PRODUCT PROPERTIES

Clonality	Monoclonal
Clone ID	ABT256
Concentration	
Conjugation	Unconjugated
Purification	The antibody was affinity-purified from mouse ascites by affinity-chromatography using specific immunogen.
Dilution Range	IHC-P 1:200-400 WB 1:200-1000
Formulation	Liquid in PBS pH7.2, 0.03% Proclin 300, with stabilizing protein.
Isotype	IgG2bk
Storage	Store at -20°C for up to 1 year from the date of receipt, and avoid repeat freeze-thaw cycles.
Instruction	

TARGET INFORMATION

Gene ID	2950
Gene Symbol	GSTP1
Uniprot ID	GSTP1_HUMAN
Immunogen	Synthesized peptide derived from the human GST-Pi at the amino acid range 150-210
Immunogen Region	150-210 aa
Specificity	The antibody can specifically recognize human GST-Pi protein.
Immunogen Sequence	



Human esophageal squamous cell carcinoma tissue was stained with Anti-GST-Pi (ABT256) Antibody