

Anti-KRT7 antibody (350-469 aa) [ABT436] (STJ190054)

STJ190054

GENERAL INFORMATION

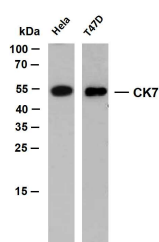
Product Type	Primary antibodies
Short Description	Mouse monoclonal antibody anti-Keratin, type II cytoskeletal 7 (350-469 aa) is suitable for use in Immunohistochemistry and Western Blot research applications.
Applications	IHC/WB
Host/Source	Mouse
Reactivity	Human

PRODUCT PROPERTIES

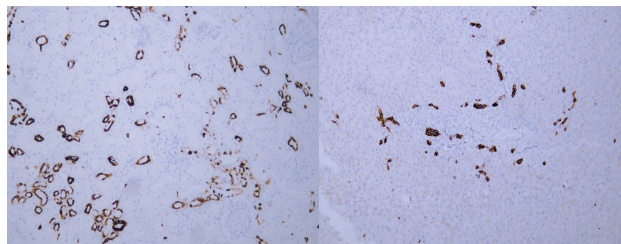
Clonality	Monoclonal
Clone ID	ABT436
Concentration	
Conjugation	Unconjugated
Purification	The antibody was affinity-purified from mouse ascites by affinity-chromatography using specific immunogen.
Dilution	IHC-P 1:200-400
Range	WB 500-1000
Formulation	Liquid in PBS pH7.2, 0.03% Proclin 300, with stabilizing protein.
Isotype	IgG1k
Storage	Store at -20°C for up to 1 year from the date of receipt, and avoid repeat freeze-thaw cycles.
Instruction	

TARGET INFORMATION

Gene ID	3855
Gene Symbol	KRT7
Uniprot ID	K2C7_HUMAN
Immunogen	Synthesized peptide derived from the human Cytokeratin 7 at the amino acid range 350-469
Immunogen Region	350-469 aa
Specificity	The antibody can specifically recognize human CK7 protein, and shows no cross reaction with CK1, 4, 5, 6, 8, 10, 14, 17, 18, 19, 20. In western blotting of HeLa, A431, A549 and HeLa cell lysates, the
Immunogen Sequence	



Various whole cell lysates were separated by 12% SDS-PAGE, and the membrane was blotted with anti-CK7 (ABT436) antibody. The HRP-conjugated Goat anti-mouse IgG (H + L) antibody was used to detect the antibody. Lane 1: HeLa Lane 2: T47D Predicted band size: 51kDa Observed band size: 51kDa



Human kidney tissue was stained with Anti-Cytokeratin 7 (ABT436) Antibody

Human liver tissue was stained with Anti-Cytokeratin 7 (ABT436) Antibody

This product is suitable for in-vitro studies under the RESEARCH USE ONLY [RUO] licence. This product must not be used as for diagnostic or other medical purposes.
St John's Laboratory Ltd, Knowledge Dock Business Centre, University Way, London, E16 2RD | Tel: 0208 223 3081