

Anti-Smoothelin antibody [ZR169] (STJ180597)

STJ180597

GENERAL INFORMATION

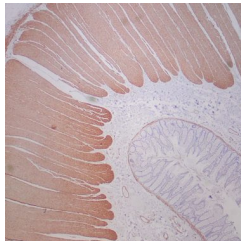
Product Type	Primary antibodies
Short Description	Rabbit monoclonal antibody anti-Smoothelin is suitable for use in Immunohistochemistry research applications.
Applications	IHC-P
Host/Source	Rabbit
Reactivity	Human

PRODUCT PROPERTIES

Clonality	Monoclonal
Clone ID	ZR169
Concentration	
Conjugation	Unconjugated
Purification	Affinity purified
Dilution Range	1:100-200
Formulation	Tris-HCl buffer containing stabilizing protein (BSA) and <0.1% ProClin
Isotype	IgG
Storage	Store at 2-8°C for up to 24 months. Predilute: Ready to use, no reconstitution necessary. Concentrate: Use dilution range and appropriate lab-standardized diluent. Stability after dilution: 7 days at 24°C, 3 months at 2-8°C, 6months at -20°C.
Instruction	

TARGET INFORMATION

Gene ID	6525
Gene Symbol	SMTN
Uniprot ID	SMTN_HUMAN
Immunogen	Recombinant full-length human Smoothelin (SMTN) protein
Immunogen Region	
Specificity	Positive Control: Leiomyoma
Immunogen Sequence	



Formalin-fixed, paraffin-embedded human colon stained with clone ZR169 using peroxidase-conjugate and DAB chromogen. Note strong cytoplasmic staining of muscularis propria and weak staining of muscularis mucosae.

This product is suitable for in-vitro studies under the RESEARCH USE ONLY [RUO] licence. This product must not be used as for diagnostic or other medical purposes.
St John's Laboratory Ltd, Knowledge Dock Business Centre, University Way, London, E16 2RD | Tel: 0208 223 3081