

Anti-ROS1 antibody (Cytoplasmic Domain) [ZR400] (STJ180593)

STJ180593

GENERAL INFORMATION

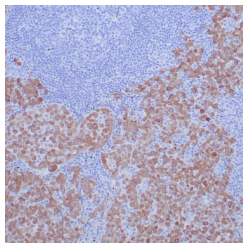
Product Type	Primary antibodies
Short Description	Rabbit monoclonal antibody anti-ROS1 (Cytoplasmic Domain) is suitable for use in Immunohistochemistry research applications.
Applications	IHC-P
Host/Source	Rabbit
Reactivity	Human

PRODUCT PROPERTIES

Clonality	Monoclonal
Clone ID	ZR400
Concentration	
Conjugation	Unconjugated
Purification	Affinity purified
Dilution Range	1:100-200
Formulation	Tris-HCl buffer containing stabilizing protein (BSA) and <0.1% ProClin
Isotype	IgG
Storage	Store at 2-8°C for up to 24 months. Predilute: Ready to use, no reconstitution necessary. Concentrate: Use dilution range and appropriate lab-standardized diluent. Stability after dilution: 7 days at 24°C, 3 months at 2-8°C, 6months at -20°C.
Instruction	

TARGET INFORMATION

Gene ID	6098
Gene Symbol	ROS1
Uniprot ID	ROS1_HUMAN
Immunogen	Recombinant fragment corresponding to the cytoplasmic domain of human ROS1 protein
Immunogen Region	Cytoplasmic Domain
Specificity	Positive Control: Human brain, lung adenocarcinoma or primary glioblastoma
Immunogen Sequence	



Formalin-fixed, paraffin-embedded human node with metastatic lung adenocarcinoma stained with anti-ROS1 antibody using peroxidase-conjugate and DAB chromogen. Note cytoplasmic staining of tumor cells