

Anti-MLH-1 antibody (Full length) [ZR347] (STJ180521)

STJ180521

GENERAL INFORMATION

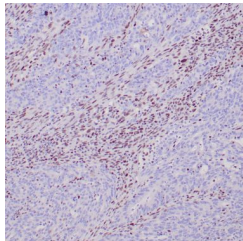
Product Type	Primary antibodies
Short Description	Rabbit monoclonal antibody anti-MLH-1 (Full length) is suitable for use in Immunohistochemistry research applications.
Applications	IHC-P
Host/Source	Rabbit
Reactivity	Human

PRODUCT PROPERTIES

Clonality	Monoclonal
Clone ID	ZR347
Concentration	
Conjugation	Unconjugated
Purification	Affinity purified
Dilution Range	1:100-200
Formulation	Tris-HCl buffer containing stabilizing protein (BSA) and <0.1% ProClin
Isotype	IgG
Storage	Store at 2-8°C for up to 24 months. Predilute: Ready to use, no reconstitution necessary. Concentrate: Use dilution range and appropriate lab-standardized diluent. Stability after dilution: 7 days at 24°C, 3 months at 2-8°C, 6months at -20°C.
Instruction	

TARGET INFORMATION

Gene ID	4292
Gene Symbol	MLH1
Uniprot ID	MLH1_HUMAN
Immunogen	Full-length human MLH-1 protein
Immunogen Region	Full length
Specificity	Positive control: Colon carcinoma
Immunogen Sequence	



Human colon adenocarcinoma with Lynch syndrome stained with anti-MLH-1 antibody using peroxidase-conjugate and DAB chromogen. Note absence of nuclear staining of tumor cells whereas the background non tumor cells are positive.

This product is suitable for in-vitro studies under the RESEARCH USE ONLY [RUO] licence. This product must not be used as for diagnostic or other medical purposes.
St John's Laboratory Ltd, Knowledge Dock Business Centre, University Way, London, E16 2RD | Tel: 0208 223 3081