

Anti-LEF1 antibody (100-200aa) [ZR336] (STJ180463)

STJ180463

GENERAL INFORMATION

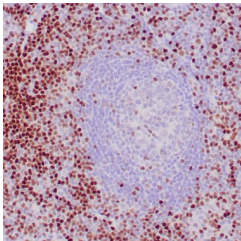
Product Type	Primary antibodies
Short Description	Rabbit monoclonal antibody anti-LEF1 (100-200aa) is suitable for use in Immunohistochemistry research applications.
Applications	IHC-P
Host/Source	Rabbit
Reactivity	Human

PRODUCT PROPERTIES

Clonality	Monoclonal
Clone ID	ZR336
Concentration	
Conjugation	Unconjugated
Purification	Affinity purified
Dilution Range	1:100-200
Formulation	Tris-HCl buffer containing stabilizing protein (BSA) and <0.1% ProClin
Isotype	IgG
Storage Instruction	Store at 2-8°C for up to 24 months. Predilute: Ready to use, no reconstitution necessary. Concentrate: Use dilution range and appropriate lab-standardized diluent. Stability after dilution: 7 days at 24°C, 3 months at 2-8°C, 6months at -20°C.

TARGET INFORMATION

Gene ID	51176
Gene Symbol	LEF1
Uniprot ID	LEF1_HUMAN
Immunogen	Fragment (around aa 100-200) of human LEF1 protein
Immunogen Region	100-200aa
Specificity	Positive control: CLL/SLL
Immunogen Sequence	



Human tonsil stained with anti-LEF1 using peroxidase conjugate and DAB chromogen. Note nuclear staining of subset of B cells.

This product is suitable for in-vitro studies under the RESEARCH USE ONLY [RUO] licence. This product must not be used as for diagnostic or other medical purposes.
St John's Laboratory Ltd, Knowledge Dock Business Centre, University Way, London, E16 2RD | Tel: 0208 223 3081