

Anti-CEA antibody (STJ180408)

STJ180408

GENERAL INFORMATION

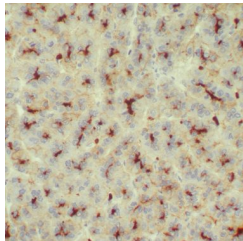
Product Type	Primary antibodies
Short Description	Rabbit polyclonal antibody anti-CEA is suitable for use in Immunohistochemistry research applications.
Applications	IHC-P
Host/Source	Rabbit
Reactivity	Human

PRODUCT PROPERTIES

Clonality	Polyclonal
Clone ID	
Concentration	
Conjugation	Unconjugated
Purification	Affinity purified
Dilution Range	1:100-200
Formulation	Tris-HCl buffer containing stabilizing protein (BSA) and <0.1% ProClin
Isotype	IgG
Storage	Store at 2-8°C for up to 24 months. Predilute: Ready to use, no reconstitution necessary. Concentrate: Use dilution range and appropriate lab-standardized diluent. Stability after dilution: 7 days at 24°C, 3 months at 2-8°C, 6months at -20°C.
Instruction	

TARGET INFORMATION

Gene ID	1048
Gene Symbol	CEACAM5
Uniprot ID	CEAM5_HUMAN
Immunogen	Human colon carcinoma extract
Immunogen Region	
Specificity	Positive control: Colon carcinoma
Immunogen Sequence	



Human liver stained with anti-CEA polyclonal antibody using peroxidase-conjugate and DAB chromogen. Note the canalicular staining pattern.