

Anti-Myelin basic protein antibody (150-250aa) [ZR109] (STJ180336)

STJ180336

GENERAL INFORMATION

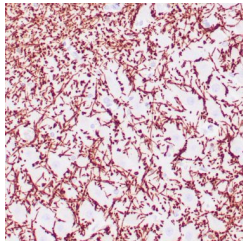
Product Type	Primary antibodies
Short Description	Rabbit monoclonal antibody anti-Myelin basic protein (150-250aa) is suitable for use in Immunohistochemistry research applications.
Applications	IHC-P
Host/Source	Rabbit
Reactivity	Human

PRODUCT PROPERTIES

Clonality	Monoclonal
Clone ID	ZR109
Concentration	
Conjugation	Unconjugated
Purification	Affinity purified
Dilution Range	1:100-200
Formulation	Tris-HCl buffer containing stabilizing protein (BSA) and <0.1% ProClin
Isotype	Rabbit IgG
Storage	Store at 2-8°C for up to 24 months. Predilute: Ready to use, no reconstitution necessary. Concentrate: Use dilution range and appropriate lab-standardized diluent. Stability after dilution: 7 days at 24°C, 3 months at 2-8°C, 6months at -20°C.
Instruction	

TARGET INFORMATION

Gene ID	5553
Gene Symbol	PRG2
Uniprot ID	PRG2_HUMAN
Immunogen	Recombinant fragment (around aa 150-250) of human MBP
Immunogen Region	150-250aa
Specificity	Positive control: Brain
Immunogen Sequence	



Human brain white matter stained with anti-MBP antibody using peroxidase-conjugate and DAB chromogen. Note the cytoplasmic staining of glial cells.