

Anti-TLE1 antibody (175-338aa) [ZM93] (STJ180329)

GENERAL INFORMATION

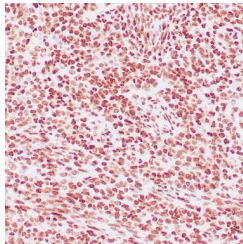
Product Type	Primary antibodies
Short Description	Mouse monoclonal antibody anti-TLE1 (175-338aa) is suitable for use in Immunohistochemistry research applications.
Applications	IHC-P
Host/Source	Mouse
Reactivity	Human

PRODUCT PROPERTIES

Clonality	Monoclonal
Clone ID	ZM93
Concentration	
Conjugation	Unconjugated
Purification	Affinity purified
Dilution Range	1:100-200
Formulation	Tris-HCl buffer containing stabilizing protein (BSA) and <0.1% ProClin
Isotype	IgG2a/Kappa
Storage	Store at 2-8°C for up to 24 months. Predilute: Ready to use, no reconstitution necessary. Concentrate: Use dilution range and appropriate lab-standardized diluent. Stability after dilution: 7 days at 24°C, 3 months at 2-8°C, 6months at -20°C.
Instruction	

TARGET INFORMATION

Gene ID	7088
Gene Symbol	TLE1
Uniprot ID	TLE1_HUMAN
Immunogen	Recombinant human TLE1 fragment (aa 175-338)
Immunogen Region	175-338aa
Specificity	Positive control: Synovial sarcoma
Immunogen Sequence	



Human synovial sarcoma stained with anti-TLE1 antibody using peroxidase-conjugate and DAB chromogen. Note nuclear staining of tumor cells.