

Anti-Mesothelin antibody (273-407aa) [ZM25] (STJ180297)

STJ180297

GENERAL INFORMATION

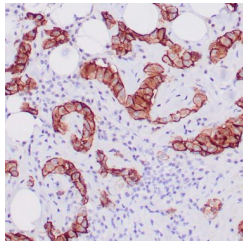
Product Type	Primary antibodies
Short Description	Mouse monoclonal antibody anti-Mesothelin (273-407aa) is suitable for use in Immunohistochemistry research applications.
Applications	IHC-P
Host/Source	Mouse
Reactivity	Human

PRODUCT PROPERTIES

Clonality	Monoclonal
Clone ID	ZM25
Concentration	
Conjugation	Unconjugated
Purification	Affinity purified
Dilution Range	1:100-200
Formulation	Tris-HCl buffer containing stabilizing protein (BSA) and <0.1% ProClin
Isotype	IgG2b/Kappa
Storage	Store at 2-8°C for up to 24 months. Predilute: Ready to use, no reconstitution necessary. Concentrate: Use dilution range and appropriate lab-standardized diluent. Stability after dilution: 7 days at 24°C, 3 months at 2-8°C, 6months at -20°C.
Instruction	

TARGET INFORMATION

Gene ID	10232
Gene Symbol	MSLN
Uniprot ID	MSLN_HUMAN
Immunogen	Recombinant human mesothelin (MSLN) protein fragment (around aa 273-407)
Immunogen Region	273-407aa
Specificity	Positive control: Mesothelioma
Immunogen Sequence	



Human mesothelioma stained with anti-Mesothelin antibody using peroxidase-conjugate and DAB chromogen. Note membranous staining of tumor cells.

This product is suitable for in-vitro studies under the RESEARCH USE ONLY [RUO] licence. This product must not be used as for diagnostic or other medical purposes.
St John's Laboratory Ltd, Knowledge Dock Business Centre, University Way, London, E16 2RD | Tel: 0208 223 3081