

## Anti-RCC antibody [66.4.C2] (STJ180234)

STJ180234

### GENERAL INFORMATION

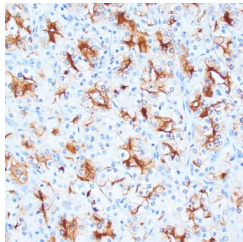
|                          |   |
|--------------------------|---|
| <b>Product Type</b>      | Primary antibodies  |
| <b>Short Description</b> | Mouse monoclonal antibody anti-RCC is suitable for use in Immunohistochemistry research applications. |
| <b>Applications</b>      | IHC-P   |
| <b>Host/Source</b>       | Mouse   |
| <b>Reactivity</b>        | Human   |

### PRODUCT PROPERTIES

|                            |  |
|----------------------------|--|
| <b>Clonality</b>           | Monoclonal   |
| <b>Clone ID</b>            | 66.4.C2  |
| <b>Concentration</b>       |  |
| <b>Conjugation</b>         | Unconjugated   |
| <b>Purification</b>        | Affinity purified  |
| <b>Dilution Range</b>      | 1:100-200  |
| <b>Formulation</b>         | Tris-HCl buffer containing stabilizing protein (BSA) and <0.1% ProClin   |
| <b>Isotype</b>             | IgG2a/Kappa  |
| <b>Storage Instruction</b> | Store at 2-8°C for up to 24 months. Predilute: Ready to use, no reconstitution necessary. Concentrate: Use dilution range and appropriate lab-standardized diluent. Stability after dilution: 7 days at 24°C, 3 months at 2-8°C, 6months at -20°C. |

### TARGET INFORMATION

|                           |   |
|---------------------------|---|
| <b>Gene ID</b>            |   |
| <b>Gene Symbol</b>        |   |
| <b>Uniprot ID</b>         |   |
| <b>Immunogen</b>          | Native from human renal cortical tissue homogenate      |
| <b>Immunogen Region</b>   |   |
| <b>Specificity</b>        | Positive control: Normal kidney or renal cell carcinoma |
| <b>Immunogen Sequence</b> |   |



Human clear cell renal cell carcinoma stained with anti-RCC antibody using peroxidase-conjugate and DAB chromogen. Note the cytoplasmic and Golgi staining of tumor cells.