

Anti-Mesothelial cell antibody [HBME-1] (STJ180170)

STJ180170

GENERAL INFORMATION

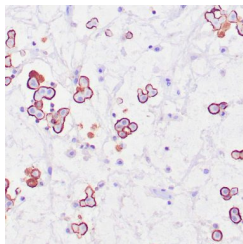
| | |
|--------------------------|--|
| Product Type | Primary antibodies |
| Short Description | Mouse monoclonal antibody anti-Mesothelial cell is suitable for use in Immunohistochemistry research applications. |
| Applications | IHC-P |
| Host/Source | Mouse |
| Reactivity | Human |

PRODUCT PROPERTIES

| | |
|-----------------------|--|
| Clonality | Monoclonal |
| Clone ID | HBME-1 |
| Concentration | |
| Conjugation | Unconjugated |
| Purification | Affinity purified |
| Dilution Range | 1:25-100 |
| Formulation | Tris-HCl buffer containing stabilizing protein (BSA) and <0.1% ProClin |
| Isotype | IgG1/Kappa |
| Storage | Store at 2-8°C for up to 24 months. Predilute: Ready to use, no reconstitution necessary. Concentrate: Use dilution range and appropriate lab-standardized diluent. Stability after dilution: 7 days at 24°C, 3 months at 2-8°C, 6months at -20°C. |
| Instruction | |

TARGET INFORMATION

| | |
|---------------------------|--|
| Gene ID | |
| Gene Symbol | |
| Uniprot ID | |
| Immunogen | A suspension of mesothelioma cells of human origin |
| Immunogen Region | |
| Specificity | Positive control: Mesothelioma |
| Immunogen Sequence | |



Human mesothelioma stained with anti-HBME1 antibody using peroxidase-conjugate and DAB chromogen. Note membranous staining of tumor cells.

This product is suitable for in-vitro studies under the RESEARCH USE ONLY [RUO] licence. This product must not be used as for diagnostic or other medical purposes.
St John's Laboratory Ltd, Knowledge Dock Business Centre, University Way, London, E16 2RD | Tel: 0208 223 3081