

## Anti-ERBB2 antibody (ECD) [ZR5] (STJ180123)

STJ180123

### GENERAL INFORMATION

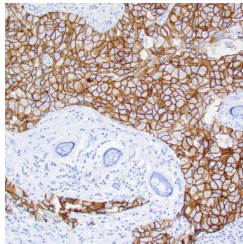
<b>Product Type</b>	Primary antibodies
<b>Short Description</b>	Rabbit monoclonal antibody anti-ERBB2 (ECD) is suitable for use in Immunohistochemistry research applications.
<b>Applications</b>	IHC-P
<b>Host/Source</b>	Rabbit
<b>Reactivity</b>	Human

### PRODUCT PROPERTIES

<b>Clonality</b>	Monoclonal
<b>Clone ID</b>	ZR5
<b>Concentration</b>	
<b>Conjugation</b>	Unconjugated
<b>Purification</b>	Affinity purified
<b>Dilution Range</b>	1:200-300
<b>Formulation</b>	Tris-HCl buffer containing stabilizing protein (BSA) and <0.1% ProClin
<b>Isotype</b>	IgG
<b>Storage</b>	Store at 2-8°C for up to 24 months. Predilute: Ready to use, no reconstitution necessary. Concentrate: Use dilution range and appropriate lab-standardized diluent. Stability after dilution: 7 days at 24°C, 3 months at 2-8°C, 6months at -20°C.
<b>Instruction</b>	

### TARGET INFORMATION

<b>Gene ID</b>	2064
<b>Gene Symbol</b>	ERBB2
<b>Uniprot ID</b>	ERBB2_HUMAN
<b>Immunogen</b>	Recombinant protein encoding extracellular domain of human c-erbB2
<b>Immunogen Region</b>	ECD
<b>Specificity</b>	Positive control: Breast carcinomas
<b>Immunogen Sequence</b>	



Human breast infiltrating ductal carcinoma stained with anti-Her-2/neu antibody using peroxidase-conjugate and DAB chromogen. Note the strong membrane staining (3+) of carcinoma cells.