

## Anti-CD68 antibody [KP1] (STJ180068)

STJ180068

### GENERAL INFORMATION

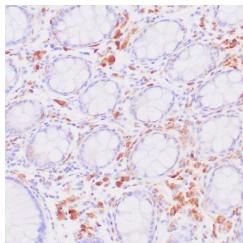
<b>Product Type</b>	Primary antibodies
<b>Short Description</b>	Mouse monoclonal antibody anti-CD68 is suitable for use in Immunohistochemistry research applications.
<b>Applications</b>	IHC-P
<b>Host/Source</b>	Mouse
<b>Reactivity</b>	Human

### PRODUCT PROPERTIES

<b>Clonality</b>	Monoclonal
<b>Clone ID</b>	KP1
<b>Concentration</b>	
<b>Conjugation</b>	Unconjugated
<b>Purification</b>	Affinity purified
<b>Dilution Range</b>	1:100-200
<b>Formulation</b>	Tris-HCl buffer containing stabilizing protein (BSA) and <0.1% ProClin
<b>Isotype</b>	IgG1/Kappa
<b>Storage</b>	Store at 2-8°C for up to 24 months. Predilute: Ready to use, no reconstitution necessary. Concentrate: Use dilution range and appropriate lab-standardized diluent. Stability after dilution: 7 days at 24°C, 3 months at 2-8°C, 6months at -20°C.
<b>Instruction</b>	

### TARGET INFORMATION

<b>Gene ID</b>	968
<b>Gene Symbol</b>	CD68
<b>Uniprot ID</b>	CD68_HUMAN
<b>Immunogen</b>	Subcellular fraction of human alveolar macrophages
<b>Region</b>	
<b>Specificity</b>	Positive control: Tonsil, lymph node, spleen
<b>Immunogen Sequence</b>	



Human colon stained with anti-CD68 antibody using peroxidase conjugate and DAB chromogen. Note intense cytoplasmic staining of glandular cells.