

Anti-Synaptophysin antibody [27G12] (STJ16101793)

STJ16101793

GENERAL INFORMATION

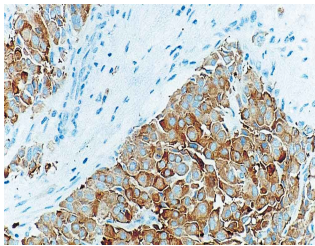
Product Type	Primary antibodies
Short Description	Mouse monoclonal antibody anti-Synaptophysin is suitable for use in Immunohistochemistry research applications.
Applications	IHC-P
Host/Source	Mouse
Reactivity	Human

PRODUCT PROPERTIES

Clonality	Monoclonal
Clone ID	27G12
Concentration	>=42 mg/L
Conjugation	Unconjugated
Purification	
Dilution Range	IHC-P 1:200
Formulation	Tissue culture supernatant with sodium azide
Isotype	IgG1
Storage Instruction	Store at 2-8°C upon receipt.

TARGET INFORMATION

Gene ID	6855
Gene Symbol	SYP
Uniprot ID	SYPH_HUMAN
Immunogen	Synthetic peptide corresponding to a region near to the C-terminal region of the synaptophysin molecule.
Immunogen Region	
Specificity	
Immunogen Sequence	



This product is suitable for in-vitro studies under the RESEARCH USE ONLY [RUO] licence. This product must not be used as for diagnostic or other medical purposes.
St John's Laboratory Ltd, Knowledge Dock Business Centre, University Way, London, E16 2RD | Tel: 0208 223 3081