

Anti-MLH-1 antibody [ES05] (STJ16101769)

STJ16101769

GENERAL INFORMATION

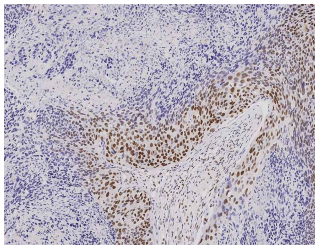
Product Type	Primary antibodies
Short Description	Mouse monoclonal antibody anti-Mismatch Repair Protein (MLH-1) is suitable for use in Immunohistochemistry research applications.
Applications	IHC-P
Host/Source	Mouse
Reactivity	Human

PRODUCT PROPERTIES

Clonality	Monoclonal
Clone ID	ES05
Concentration	>=165 mg/L
Conjugation	Unconjugated
Purification	
Dilution Range	IHC-P 1:50
Formulation	Tissue culture supernatant with sodium azide
Isotype	IgG1
Storage Instruction	Store at 2-8°C upon receipt.

TARGET INFORMATION

Gene ID	
Gene Symbol	
Uniprot ID	
Immunogen	Prokaryotic recombinant protein corresponding to 210 amino acids of human MLH1.
Immunogen Region	
Specificity	
Immunogen Sequence	



This product is suitable for in-vitro studies under the RESEARCH USE ONLY [RUO] licence. This product must not be used as for diagnostic or other medical purposes.
St John's Laboratory Ltd, Knowledge Dock Business Centre, University Way, London, E16 2RD | Tel: 0208 223 3081