

Anti-Myosin Heavy Chain (fast) antibody [WB-MHCf] (STJ16101765)

STJ16101765

GENERAL INFORMATION

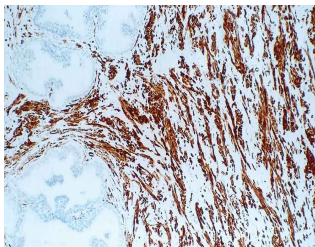
Product Type	Primary antibodies
Short Description	Mouse monoclonal antibody anti-Myosin Heavy Chain (fast) is suitable for use in Immunohistochemistry research applications.
Applications	IHC-F
Host/Source	Mouse
Reactivity	Human/Rat/Mouse/Dog/Sheep/Pig/Goat

PRODUCT PROPERTIES

Clonality	Monoclonal
Clone ID	WB-MHCf
Concentration	
Conjugation	Unconjugated
Purification	
Dilution Range	IHC-F 1:10-1:40
Formulation	Lyophilized
Isotype	IgG1
Storage Instruction	Store at 2-8°C upon receipt.

TARGET INFORMATION

Gene ID	
Gene Symbol	
Uniprot ID	
Immunogen	Native myosin extracted from rabbit psoas muscle.
Immunogen Region	
Specificity	
Immunogen Sequence	



This product is suitable for in-vitro studies under the RESEARCH USE ONLY [RUO] licence. This product must not be used as for diagnostic or other medical purposes.
St John's Laboratory Ltd, Knowledge Dock Business Centre, University Way, London, E16 2RD | Tel: 0208 223 3081