

## Anti-Myosin Heavy Chain (developmental) antibody [RNMY2/9D2] (STJ16101764)

STJ16101764

### GENERAL INFORMATION

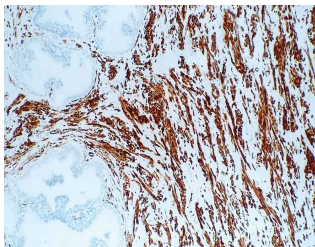
|                          |  |
|--------------------------|--|
| <b>Product Type</b>      | Primary antibodies   |
| <b>Short Description</b> | Mouse monoclonal antibody anti-Myosin Heavy Chain (developmental) is suitable for use in Immunohistochemistry research applications. |
| <b>Applications</b>      | IHC-F  |
| <b>Host/Source</b>       | Mouse  |
| <b>Reactivity</b>        | Human/Rat  |

### PRODUCT PROPERTIES

|                            |                              |
|----------------------------|------------------------------|
| <b>Clonality</b>           | Monoclonal                   |
| <b>Clone ID</b>            | RNMY2/9D2                    |
| <b>Concentration</b>       |                              |
| <b>Conjugation</b>         | Unconjugated                 |
| <b>Purification</b>        |                              |
| <b>Dilution Range</b>      | IHC-F 1:10-1:40              |
| <b>Formulation</b>         | Lyophilized                  |
| <b>Isotype</b>             | IgG1                         |
| <b>Storage Instruction</b> | Store at 2-8°C upon receipt. |

### TARGET INFORMATION

|                         |  |
|-------------------------|--|
| <b>Gene ID</b>          |  |
| <b>Gene Symbol</b>      |  |
| <b>Uniprot ID</b>       |  |
| <b>Immunogen</b>        | Native myosin extracted from the hind limb muscle of 7 day old rats. |
| <b>Immunogen Region</b> |  |
| <b>Specificity</b>      |  |
| <b>Immunogen</b>        |  |
| <b>Sequence</b>         |  |



This product is suitable for in-vitro studies under the RESEARCH USE ONLY [RUO] licence. This product must not be used as for diagnostic or other medical purposes.  
St John's Laboratory Ltd, Knowledge Dock Business Centre, University Way, London, E16 2RD | Tel: 0208 223 3081