

Anti-Emerin antibody [4G5] (STJ16101736)

STJ16101736

GENERAL INFORMATION

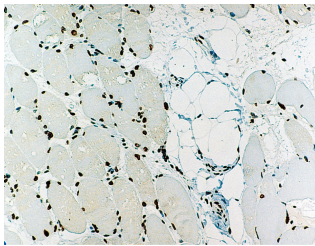
Product Type	Primary antibodies
Short Description	Mouse monoclonal antibody anti-Emerin is suitable for use in Immunohistochemistry and Immunohistochemistry research applications.
Applications	IHC-P/IHC-F
Host/Source	Mouse
Reactivity	Human

PRODUCT PROPERTIES

Clonality	Monoclonal
Clone ID	4G5
Concentration	
Conjugation	Unconjugated
Purification	
Dilution Range	
Formulation	Lyophilized
Isotype	IgG1
Storage Instruction	Store at 2-8°C upon receipt.

TARGET INFORMATION

Gene ID	2010
Gene Symbol	EMD
Uniprot ID	EMD_HUMAN
Immunogen	
Immunogen Region	
Specificity	
Immunogen	
Sequence	



This product is suitable for in-vitro studies under the RESEARCH USE ONLY [RUO] licence. This product must not be used as for diagnostic or other medical purposes.
St John's Laboratory Ltd, Knowledge Dock Business Centre, University Way, London, E16 2RD | Tel: 0208 223 3081