

Anti-DOG1 antibody [K9] (STJ16101727)

STJ16101727

GENERAL INFORMATION

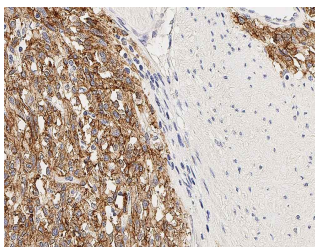
Product Type	Primary antibodies
Short Description	Mouse monoclonal antibody anti-DOG-1 is suitable for use in Immunohistochemistry research applications.
Applications	IHC-P
Host/Source	Mouse
Reactivity	Human

PRODUCT PROPERTIES

Clonality	Monoclonal
Clone ID	K9
Concentration	>=12 mg/L
Conjugation	Unconjugated
Purification	
Dilution Range	IHC-P 1:50
Formulation	Tissue culture supernatant with Sodium azide
Isotype	IgG2b
Storage Instruction	Store at 2-8°C upon receipt.

TARGET INFORMATION

Gene ID	
Gene Symbol	
Uniprot ID	
Immunogen	Prokaryotic recombinant protein corresponding to part of the C-terminus of the cytoplasmic domain of the human DOG-1 molecule.
Immunogen Region	
Specificity	
Immunogen Sequence	



This product is suitable for in-vitro studies under the RESEARCH USE ONLY [RUO] licence. This product must not be used as for diagnostic or other medical purposes.
St John's Laboratory Ltd, Knowledge Dock Business Centre, University Way, London, E16 2RD | Tel: 0208 223 3081