

Anti-CD20 antibody [L26] (STJ16101702)

STJ16101702

GENERAL INFORMATION

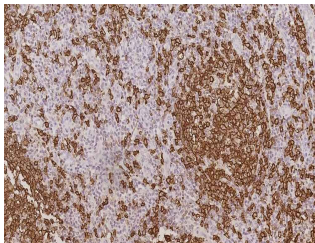
| | |
|--------------------------|--|
| Product Type | Primary antibodies |
| Short Description | Mouse monoclonal antibody anti-CD20 is suitable for use in Immunohistochemistry research applications. |
| Applications | IHC-P |
| Host/Source | Mouse |
| Reactivity | Human |

PRODUCT PROPERTIES

| | |
|----------------------------|--|
| Clonality | Monoclonal |
| Clone ID | L26 |
| Concentration | >=95 mg/L |
| Conjugation | Unconjugated |
| Purification | |
| Dilution Range | IHC-P 1:100-1:200 |
| Formulation | Tissue culture supernatant with sodium azide |
| Isotype | IgG2ak |
| Storage Instruction | Store at 2-8°C upon receipt. |

TARGET INFORMATION

| | |
|---------------------------|----------------------------|
| Gene ID | 931 |
| Gene Symbol | MS4A1 |
| Uniprot ID | CD20_HUMAN |
| Immunogen | Human tonsil B cells. |
| Immunogen Region | |
| Specificity | |
| Immunogen Sequence | |



This product is suitable for in-vitro studies under the RESEARCH USE ONLY [RUO] licence. This product must not be used as for diagnostic or other medical purposes.
 St John's Laboratory Ltd, Knowledge Dock Business Centre, University Way, London, E16 2RD | Tel: 0208 223 3081