

Anti-GCDFP-15 + Mammaglobin Cocktail antibody [23A3+304-1A5+31A5] (STJ16101536)

STJ16101536

GENERAL INFORMATION

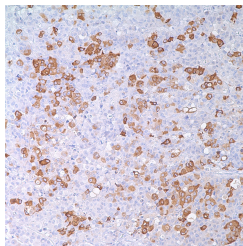
Product Type	Primary antibodies
Short Description	Rabbit, Mouse monoclonal antibody anti-GCDFP-15 + Mammaglobin Cocktail is suitable for use in Immunohistochemistry research applications.
Applications	IHC-P
Host/Source	Rabbit, Mouse
Reactivity	Human

PRODUCT PROPERTIES

Clonality	Monoclonal
Clone ID	23A3+304-1A5+31A5
Concentration	
Conjugation	Unconjugated
Purification	
Dilution Range	
Formulation	Tris Buffer, pH 7.3-7.7, containing 1% BSA and <0.1% Sodium Azide
Isotype	IgG2a/IgG1/IgG
Storage Instruction	Store at 2-8°C upon receipt.

TARGET INFORMATION

Gene ID
Gene Symbol
Uniprot ID
Immunogen
Immunogen
Region
Specificity
Immunogen
Sequence



This product is suitable for in-vitro studies under the RESEARCH USE ONLY [RUO] licence. This product must not be used as for diagnostic or other medical purposes.
 St John's Laboratory Ltd, Knowledge Dock Business Centre, University Way, London, E16 2RD | Tel: 0208 223 3081