

Anti-hPL antibody (STJ16101335)

STJ16101335

GENERAL INFORMATION

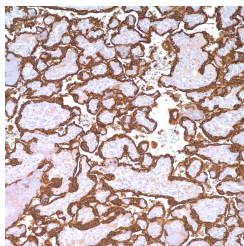
| | |
|--------------------------|--|
| Product Type | Primary antibodies |
| Short Description | Rabbit polyclonal antibody anti-hPL is suitable for use in Immunohistochemistry research applications. |
| Applications | IHC-P |
| Host/Source | Rabbit |
| Reactivity | Human |

PRODUCT PROPERTIES

| | |
|----------------------------|---|
| Clonality | Polyclonal |
| Clone ID | |
| Concentration | |
| Conjugation | Unconjugated |
| Purification | Affinity purified |
| Dilution Range | IHC-P 1:50-1:200 |
| Formulation | Tris Buffer, pH 7.3-7.7, containing 1% BSA and <0.1% Sodium Azide |
| Isotype | |
| Storage Instruction | Store at 2-8°C upon receipt. |

TARGET INFORMATION

| | |
|---------------------------|----------------------------|
| Gene ID | 3956 |
| Gene Symbol | LGALS1 |
| Uniprot ID | LEG1_HUMAN |
| Immunogen | |
| Immunogen Region | |
| Specificity | |
| Immunogen Sequence | |



This product is suitable for in-vitro studies under the RESEARCH USE ONLY [RUO] licence. This product must not be used as for diagnostic or other medical purposes.
St John's Laboratory Ltd, Knowledge Dock Business Centre, University Way, London, E16 2RD | Tel: 0208 223 3081