

Anti-GLUT1 antibody (STJ16101329)

STJ16101329

GENERAL INFORMATION

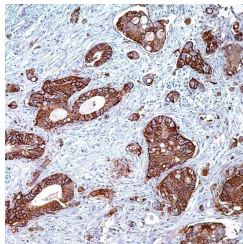
Product Type	Primary antibodies
Short Description	Rabbit polyclonal antibody anti-GLUT1 is suitable for use in Immunohistochemistry research applications.
Applications	IHC-P
Host/Source	Rabbit
Reactivity	Human

PRODUCT PROPERTIES

Clonality	Polyclonal
Clone ID	
Concentration	
Conjugation	Unconjugated
Purification	Affinity purified
Dilution Range	IHC-P 1:50-1:200
Formulation	Tris Buffer, pH 7.3-7.7, containing 1% BSA and <0.1% Sodium Azide
Isotype	
Storage Instruction	Store at 2-8°C upon receipt.

TARGET INFORMATION

Gene ID	6513
Gene Symbol	SLC2A1
Uniprot ID	GTR1_HUMAN
Immunogen	
Immunogen Region	
Specificity	
Immunogen Sequence	



This product is suitable for in-vitro studies under the RESEARCH USE ONLY [RUO] licence. This product must not be used as for diagnostic or other medical purposes.
St John's Laboratory Ltd, Knowledge Dock Business Centre, University Way, London, E16 2RD | Tel: 0208 223 3081