

Anti-Lck-interacting molecule [LIME] antibody (STJ16101298)

STJ16101298

GENERAL INFORMATION

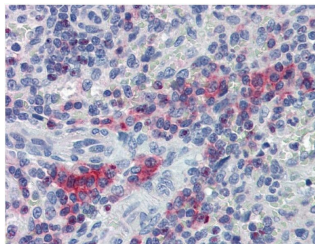
| | |
|--------------------------|---|
| Product Type | Primary antibodies |
| Short Description | Rabbit polyclonal antibody anti-Lck-interacting molecule [LIME] is suitable for use in Western Blot and Immunohistochemistry research applications. |
| Applications | WB/IHC-P |
| Host/Source | Rabbit |
| Reactivity | Human |

PRODUCT PROPERTIES

| | |
|-----------------------|--|
| Clonality | Polyclonal |
| Clone ID | |
| Concentration | 1 mg/mL |
| Conjugation | Unconjugated |
| Purification | Affinity purified |
| Dilution Range | |
| Formulation | Phosphate buffered saline (PBS) solution with 15 mM sodium azide |
| Isotype | |
| Storage | Store at 2-8°C upon receipt. |
| Instruction | |

TARGET INFORMATION

| | |
|---------------------------|---|
| Gene ID | |
| Gene Symbol | |
| Uniprot ID | |
| Immunogen | Bacterially expressed intracellular fragment corresponding to aa 141-295 of human LIME. |
| Immunogen Region | |
| Specificity | |
| Immunogen Sequence | |



This product is suitable for in-vitro studies under the RESEARCH USE ONLY [RUO] licence. This product must not be used as for diagnostic or other medical purposes.
St John's Laboratory Ltd, Knowledge Dock Business Centre, University Way, London, E16 2RD | Tel: 0208 223 3081