

Anti-BCL10 antibody [EBS-T-001] (STJ16101062)

STJ16101062

GENERAL INFORMATION

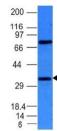
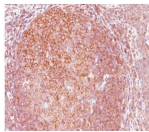
Product Type	Primary antibodies
Short Description	Mouse monoclonal antibody anti-BCL10 is suitable for use in Western Blot and Immunohistochemistry research applications.
Applications	WB/IHC
Host/Source	Mouse
Reactivity	Human

PRODUCT PROPERTIES

Clonality	Monoclonal
Clone ID	EBS-T-001
Concentration	Can be provided as 100 µg/mL, 500 µg/mL or 1mg/mL.
Conjugation	Unconjugated
Purification	Affinity purified from tissue culture.
Dilution Range	Immunoblotting (1-2 µg/ml). Immunohistology (formalin-fixed: 1-2 µg/ml for 30 min at RT; requires boiling tissue sections in 10mM citrate buffer, pH 6, 0, for 10-20 min followed by cooling at RT for 20 minutes).
Formulation	PBS with 0.02% Sodium Azide.
Isotype	IgG1k
Storage Instruction	Store for up to 1 year at 2-8°C upon receipt.

TARGET INFORMATION

Gene ID	8915
Gene Symbol	BCL10
Uniprot ID	BCL10_HUMAN
Immunogen	A BALB/c mouse was immunized with human BCL10 recombinant protein (aa122-168). Fusion partner: SP2/0.
Immunogen Region	
Specificity	
Immunogen Sequence	



This product is suitable for in-vitro studies under the RESEARCH USE ONLY [RUO] licence. This product must not be used as for diagnostic or other medical purposes.
St John's Laboratory Ltd, Knowledge Dock Business Centre, University Way, London, E16 2RD | Tel: 0208 223 3081