

## Anti-Kappa Light Chain antibody [A8B5] {FITC} (STJ16100959)

STJ16100959

### GENERAL INFORMATION

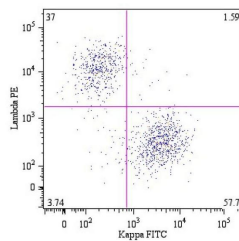
<b>Product Type</b>	Primary antibodies
<b>Short Description</b>	Mouse monoclonal antibody anti-Kappa Light Chain is suitable for use in Flow Cytometry research applications.
<b>Applications</b>	FC
<b>Host/Source</b>	Mouse
<b>Reactivity</b>	Human

### PRODUCT PROPERTIES

<b>Clonality</b>	Monoclonal
<b>Clone ID</b>	A8B5
<b>Concentration</b>	
<b>Conjugation</b>	FITC
<b>Purification</b>	
<b>Dilution Range</b>	
<b>Formulation</b>	Stabilizing phosphate buffered saline (PBS) solution containing 15 mM sodium azide
<b>Isotype</b>	IgG1
<b>Storage Instruction</b>	Store at 2-8°C upon receipt.

### TARGET INFORMATION

**Gene ID**  
**Gene Symbol**  
**Uniprot ID**  
**Immunogen**  
**Immunogen Region**  
**Specificity**  
**Immunogen Sequence**



This product is suitable for in-vitro studies under the RESEARCH USE ONLY [RUO] licence. This product must not be used as for diagnostic or other medical purposes.  
 St John's Laboratory Ltd, Knowledge Dock Business Centre, University Way, London, E16 2RD | Tel: 0208 223 3081