

Anti-HLA-DR1 antibody [MEM-267] (STJ16100939)

STJ16100939

GENERAL INFORMATION

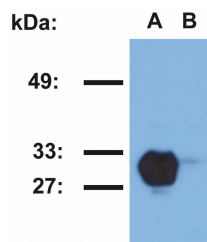
| | |
|--------------------------|---|
| Product Type | Primary antibodies |
| Short Description | Mouse monoclonal antibody anti-HLA-DR1 is suitable for use in Western Blot, Flow Cytometry and ELISA research applications. |
| Applications | WB/FC/ELISA |
| Host/Source | Mouse |
| Reactivity | Human |

PRODUCT PROPERTIES

| | |
|----------------------------|--|
| Clonality | Monoclonal |
| Clone ID | MEM-267 |
| Concentration | 1 mg/mL |
| Conjugation | Unconjugated |
| Purification | |
| Dilution Range | |
| Formulation | Phosphate buffered saline (PBS) solution with 15 mM sodium azide |
| Isotype | IgG2b |
| Storage Instruction | Store at 2-8°C upon receipt. |

TARGET INFORMATION

| | |
|---------------------------|---|
| Gene ID | |
| Gene Symbol | |
| Uniprot ID | |
| Immunogen | Purified, insoluble DR1 beta chain (DRB1*0101) expressed in E. coli inclusion bodies. |
| Immunogen Region | |
| Specificity | |
| Immunogen Sequence | |



This product is suitable for in-vitro studies under the RESEARCH USE ONLY [RUO] licence. This product must not be used as for diagnostic or other medical purposes.
St John's Laboratory Ltd, Knowledge Dock Business Centre, University Way, London, E16 2RD | Tel: 0208 223 3081