

Anti-CD300 antibody [MEM-260] (STJ16100827)

STJ16100827

GENERAL INFORMATION

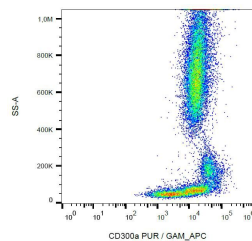
Product Type	Primary antibodies
Short Description	Mouse monoclonal antibody anti-CD300 is suitable for use in Flow Cytometry and Western Blot research applications.
Applications	FC/WB
Host/Source	Mouse
Reactivity	Human

PRODUCT PROPERTIES

Clonality	Monoclonal
Clone ID	MEM-260
Concentration	1 mg/mL
Conjugation	Unconjugated
Purification	
Dilution Range	
Formulation	Phosphate buffered saline (PBS) solution with 15 mM sodium azide
Isotype	IgG1
Storage Instruction	Store at 2-8°C upon receipt.

TARGET INFORMATION

Gene ID	
Gene Symbol	
Uniprot ID	
Immunogen	HPB human acute lymphoid leukemia cell line
Immunogen Region	
Specificity	
Immunogen Sequence	



This product is suitable for in-vitro studies under the RESEARCH USE ONLY [RUO] licence. This product must not be used as for diagnostic or other medical purposes.
St John's Laboratory Ltd, Knowledge Dock Business Centre, University Way, London, E16 2RD | Tel: 0208 223 3081