

Anti-C-erbB-2 antibody [CB11] (STJ16100742)
STJ16100742

GENERAL INFORMATION

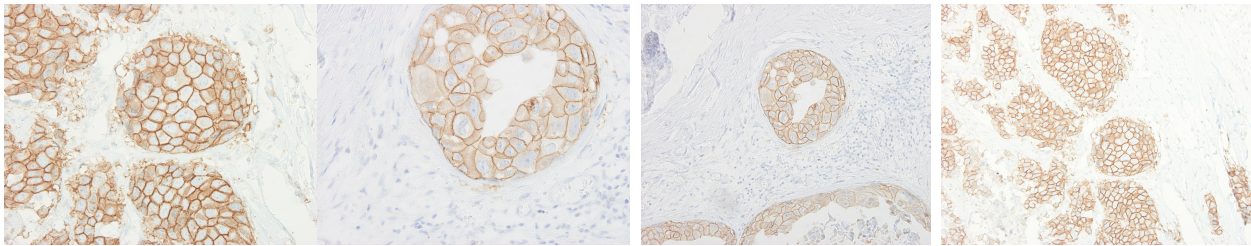
Product Type	Primary antibodies
Short Description	Mouse monoclonal antibody anti-C-erbB-2 is suitable for use in Immunohistochemistry research applications.
Applications	IHC-P
Host/Source	Mouse
Reactivity	Human

PRODUCT PROPERTIES

Clonality	Monoclonal
Clone ID	CB11
Concentration	
Conjugation	Unconjugated
Purification	
Dilution Range	IHC 1:40
Formulation	Tissue culture supernatant with sodium azide
Isotype	IgG1
Storage Instruction	Store at 2-8°C upon receipt.

TARGET INFORMATION

Gene ID	
Gene Symbol	
Uniprot ID	
Immunogen	Synthetic peptide corresponding to a site on the internal domain of the human c-erbB-2 oncoprotein.
Immunogen Region	
Specificity	
Immunogen Sequence	



This product is suitable for in-vitro studies under the RESEARCH USE ONLY [RUO] licence. This product must not be used as for diagnostic or other medical purposes.
St John's Laboratory Ltd, Knowledge Dock Business Centre, University Way, London, E16 2RD | Tel: 0208 223 3081