

## Anti-SOCS3 antibody [SO1] (STJ16100689)

STJ16100689

### GENERAL INFORMATION

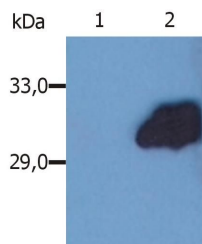
|                          |   |
|--------------------------|---|
| <b>Product Type</b>      | Primary antibodies  |
| <b>Short Description</b> | Mouse monoclonal antibody anti-SOCS3 is suitable for use in Western Blot research applications. |
| <b>Applications</b>      | WB  |
| <b>Host/Source</b>       | Mouse   |
| <b>Reactivity</b>        | Human   |

### PRODUCT PROPERTIES

|                            |  |
|----------------------------|--|
| <b>Clonality</b>           | Monoclonal   |
| <b>Clone ID</b>            | SO1  |
| <b>Concentration</b>       | 1 mg/mL  |
| <b>Conjugation</b>         | Unconjugated   |
| <b>Purification</b>        |  |
| <b>Dilution Range</b>      |  |
| <b>Formulation</b>         | Phosphate buffered saline (PBS) solution with 15 mM sodium azide |
| <b>Isotype</b>             | IgG2b  |
| <b>Storage Instruction</b> | Store at 2-8°C upon receipt.                                     |

### TARGET INFORMATION

|                           |                            |
|---------------------------|----------------------------|
| <b>Gene ID</b>            | 9021                       |
| <b>Gene Symbol</b>        | SOCS3                      |
| <b>Uniprot ID</b>         | SOCS3_HUMAN                |
| <b>Immunogen</b>          | Full-length SOCS3 protein. |
| <b>Immunogen Region</b>   |                            |
| <b>Specificity</b>        |                            |
| <b>Immunogen Sequence</b> |                            |



This product is suitable for in-vitro studies under the RESEARCH USE ONLY [RUO] licence. This product must not be used as for diagnostic or other medical purposes.  
 St John's Laboratory Ltd, Knowledge Dock Business Centre, University Way, London, E16 2RD | Tel: 0208 223 3081