

Anti-Endothelium antibody [PAL-E] (STJ16100677)

STJ16100677

GENERAL INFORMATION

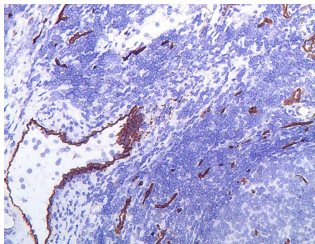
Product Type	Primary antibodies
Short Description	Mouse monoclonal antibody anti-Endothelium is suitable for use in Immunohistochemistry research applications.
Applications	IHC-F
Host/Source	Mouse
Reactivity	Human/Rabbit/Goat/Dog/Pig

PRODUCT PROPERTIES

Clonality	Monoclonal
Clone ID	PAL-E
Concentration	15 ug/mL
Conjugation	Unconjugated
Purification	
Dilution Range	IHC-F 1:20
Formulation	Culture medium with 0.01M Sodium Azide
Isotype	IgG2a
Storage Instruction	Store at 2-8°C upon receipt.

TARGET INFORMATION

Gene ID	
Gene Symbol	
Uniprot ID	
Immunogen	human melanoma tissue
Immunogen Region	
Specificity	
Immunogen Sequence	



This product is suitable for in-vitro studies under the RESEARCH USE ONLY [RUO] licence. This product must not be used as for diagnostic or other medical purposes.
St John's Laboratory Ltd, Knowledge Dock Business Centre, University Way, London, E16 2RD | Tel: 0208 223 3081