

Anti-Microtubule Associated Protein antibody [MT01] (STJ16100646)

STJ16100646

GENERAL INFORMATION

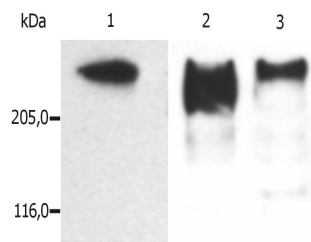
Product Type	Primary antibodies
Short Description	Mouse monoclonal antibody anti-Microtubule Associated Protein is suitable for use in Immunoprecipitation, Western Blot and Immunocytochemistry research applications.
Applications	IP/WB/ICC
Host/Source	Mouse
Reactivity	Cow/Cat/Mouse/Pig/Human

PRODUCT PROPERTIES

Clonality	Monoclonal
Clone ID	MT01
Concentration	1 mg/mL
Conjugation	Unconjugated
Purification	
Dilution Range	
Formulation	Phosphate buffered saline (PBS) solution with 15 mM sodium azide
Isotype	IgG1
Storage	Store at 2-8°C upon receipt.
Instruction	

TARGET INFORMATION

Gene ID	
Gene Symbol	
Uniprot ID	
Immunogen	Termostabile fraction of bovine brain microtubules (whole MAP2ab molecule).
Immunogen Region	
Specificity	
Immunogen Sequence	



This product is suitable for in-vitro studies under the RESEARCH USE ONLY [RUO] licence. This product must not be used as for diagnostic or other medical purposes.
St John's Laboratory Ltd, Knowledge Dock Business Centre, University Way, London, E16 2RD | Tel: 0208 223 3081