

## Anti-Beta III Tubulin antibody [TU-20] (STJ16100477)

STJ16100477

### GENERAL INFORMATION

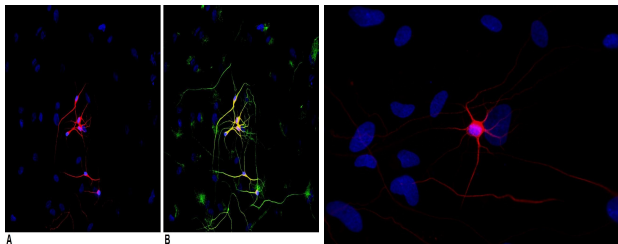
<b>Product Type</b>	Primary antibodies
<b>Short Description</b>	Mouse monoclonal antibody anti-Beta III Tubulin is suitable for use in Flow Cytometry, Western Blot, Immunohistochemistry and Immunocytochemistry research applications.
<b>Applications</b>	FC/WB/IHC-P/ICC
<b>Host/Source</b>	Mouse
<b>Reactivity</b>	Dog/Mouse/Rat/Pig/Human

### PRODUCT PROPERTIES

<b>Clonality</b>	Monoclonal
<b>Clone ID</b>	TU-20
<b>Concentration</b>	1 mg/mL
<b>Conjugation</b>	Unconjugated
<b>Purification</b>	
<b>Dilution Range</b>	
<b>Formulation</b>	Phosphate buffered saline (PBS) solution with 15 mM sodium azide
<b>Isotype</b>	IgG1
<b>Storage</b>	Store at 2-8°C upon receipt.
<b>Instruction</b>	

### TARGET INFORMATION

<b>Gene ID</b>	
<b>Gene Symbol</b>	
<b>Uniprot ID</b>	
<b>Immunogen</b>	Peptide (C) 441-448 coupled to maleimide-activated keyhole limpet hemocyanin via cysteine added to the N-terminus of the neuron-specific peptide.
<b>Immunogen Region</b>	
<b>Specificity</b>	
<b>Immunogen Sequence</b>	



This product is suitable for in-vitro studies under the RESEARCH USE ONLY [RUO] licence. This product must not be used as for diagnostic or other medical purposes.  
St John's Laboratory Ltd, Knowledge Dock Business Centre, University Way, London, E16 2RD | Tel: 0208 223 3081