

Anti-CD1a antibody [EP3622] (STJ16100442)

STJ16100442

GENERAL INFORMATION

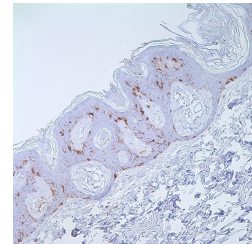
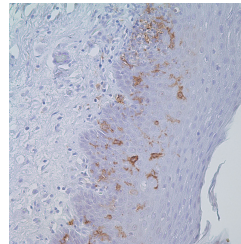
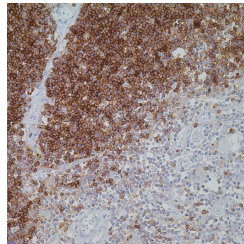
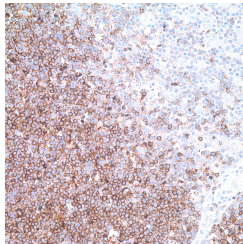
Product Type	Primary antibodies
Short Description	Rabbit monoclonal antibody anti-CD1a is suitable for use in Immunohistochemistry research applications.
Applications	IHC-P
Host/Source	Rabbit
Reactivity	Human

PRODUCT PROPERTIES

Clonality	Monoclonal
Clone ID	EP3622
Concentration	
Conjugation	Unconjugated
Purification	
Dilution Range	IHC 1:25 – 1:100
Formulation	Tris Buffer, pH 7.3-7.7, containing 1% BSA and <0.1% Sodium Azide
Isotype	IgG
Storage Instruction	Store at 2-8°C upon receipt.

TARGET INFORMATION

Gene ID	909
Gene Symbol	CD1A
Uniprot ID	CD1A_HUMAN
Immunogen	
Immunogen Region	
Specificity	
Immunogen Sequence	



This product is suitable for in-vitro studies under the RESEARCH USE ONLY [RUO] licence. This product must not be used as for diagnostic or other medical purposes.
St John's Laboratory Ltd, Knowledge Dock Business Centre, University Way, London, E16 2RD | Tel: 0208 223 3081