

Anti-GCDFP-15 antibody [EP1582Y] (STJ16100371)

STJ16100371

GENERAL INFORMATION

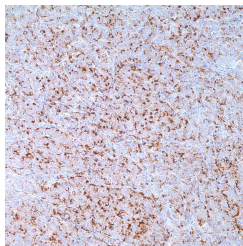
Product Type	Primary antibodies
Short Description	Rabbit monoclonal antibody anti-GCDFP-15 is suitable for use in Immunohistochemistry research applications.
Applications	IHC-P
Host/Source	Rabbit
Reactivity	Human

PRODUCT PROPERTIES

Clonality	Monoclonal
Clone ID	EP1582Y
Concentration	
Conjugation	Unconjugated
Purification	
Dilution Range	IHC 1:100 – 1:500
Formulation	Tris Buffer, pH 7.3-7.7, containing 1% BSA and <0.1% Sodium Azide
Isotype	IgG
Storage Instruction	Store at 2-8°C upon receipt.

TARGET INFORMATION

Gene ID	5304
Gene Symbol	PIP
Uniprot ID	PIP_HUMAN
Immunogen	
Immunogen Region	
Specificity	
Immunogen Sequence	



This product is suitable for in-vitro studies under the RESEARCH USE ONLY [RUO] licence. This product must not be used as for diagnostic or other medical purposes.
St John's Laboratory Ltd, Knowledge Dock Business Centre, University Way, London, E16 2RD | Tel: 0208 223 3081